

MAYA

HIDDEN WORLDS REVEALED®
MUNDOS OCULTOS REVELADOS



at the Witte Museum's New Mays Family Center

May 14 – September 5, 2016



See It First and Free at the 3-Day Grand Opening!



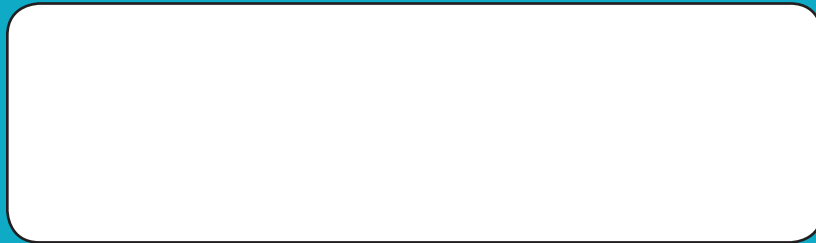


3801 Broadway
San Antonio, Texas 78209

YOUR PERSONAL INVITATION



Free Tickets to *Maya: Hidden Worlds Revealed* Grand Opening Weekend
+ Discounts on **15 Months of Free General Admission** to the NEW WITTE!

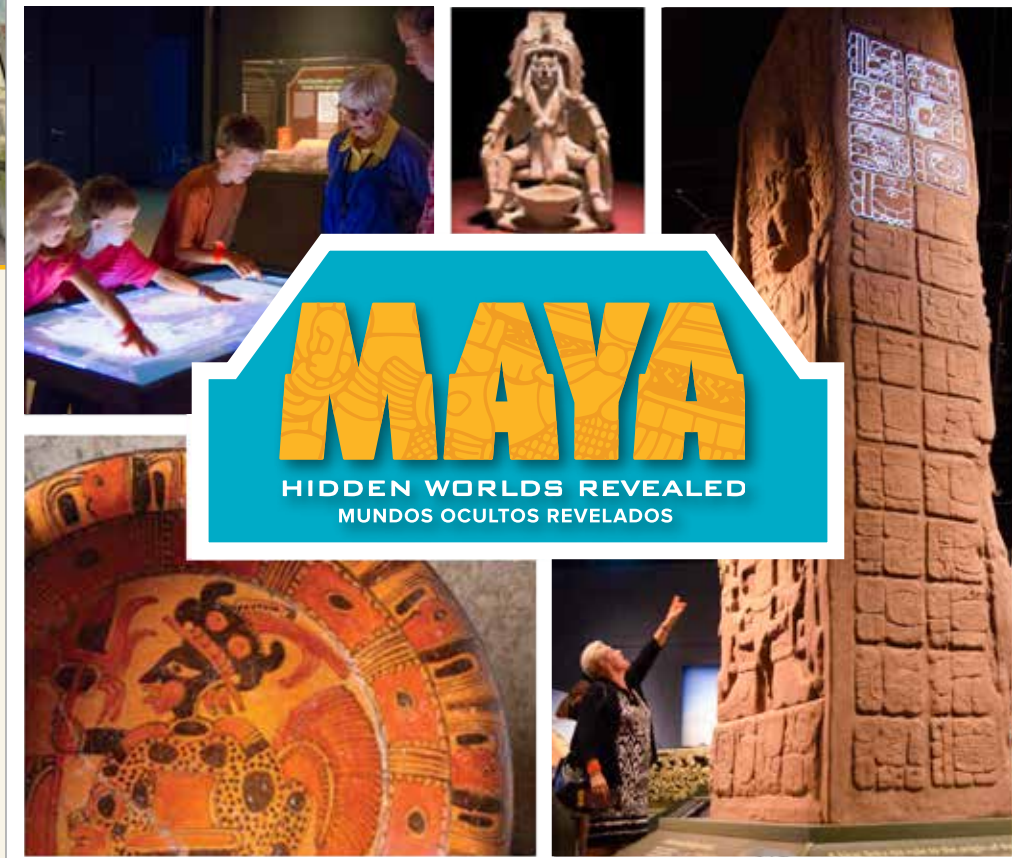
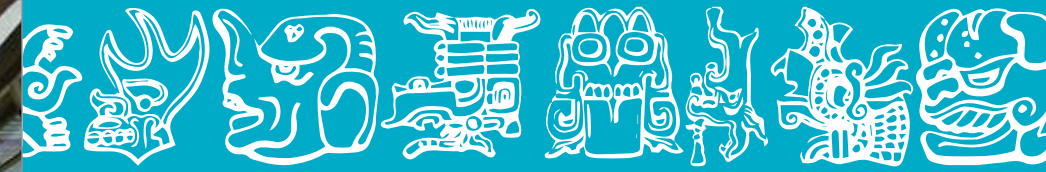


*Plus New Witte
coming spring 2017!*



Membership Levels and Benefits

Join by May 31, 2016, for **3 EXTRA months of membership** + a free commemorative tote bag.



MAYA
HIDDEN WORLDS REVEALED
MUNDOS OCULTOS REVELADOS

Members at all levels enjoy the following benefits for an entire year:

- **Unlimited free general admission for one-year 15 months!**
- **Free admission to *Maya: Hidden Worlds Revealed*** during the Grand Opening Weekend
- A free subscription to the member newsletter
- Invitations to exhibition openings and the annual holiday and Witte Unlocked parties
- Discounts on special programs, including Witte Museum Camp and Overnight Camp-Ins for children, as well as adult programs
- Special members-only discounts on children's birthday parties
- 10% discount on purchases from the Witte Museum Store

Individual Membership \$40

Benefits for one person.

Senior Family Membership \$70

Benefits for two adults, age 65 and older, and their children or grandchildren age 18 and under, plus:

- Free admission to more than 350 U.S. science and technology museums

Family Membership \$75

Benefits for two adults and their children or grandchildren age 18 and under, plus:

- Free admission to more than 350 U.S. science and technology museums

Save when you join at a Witte Society level or above!

Witte Society Individual Membership ~~\$110~~ \$85

Benefits for one person, plus:

- Discounted admission to the annual Witte Game Dinner
- Exclusive invitation to Witte Society events
- Free admission to more than 350 U.S. science and technology museums

+ **Two free tickets to *Maya: Hidden Worlds Revealed***

Witte Society Family Membership ~~\$200~~ \$175

Benefits for two adults and their children or grandchildren age 18 and under, plus:

- Discounted admission to the annual Witte Game Dinner
- Exclusive invitation to Witte Society events
- Free general admission for two additional guests
- Free admission to more than 350 U.S. science and technology museums

+ **Four free tickets to *Maya: Hidden Worlds Revealed***

Explorer Membership ~~\$250~~ \$225

Witte Society Family benefits, plus:

- Free admission to an additional 180 historical museums

+ **Four free tickets to *Maya: Hidden Worlds Revealed***

Voyager Membership ~~\$500~~ \$450

Explorer benefits, plus:

- Special programs hosted by curators

+ **Four free tickets to *Maya: Hidden Worlds Revealed***

Please note: Limited-time membership discounts are available only when you join by mail, phone, or on-site at the Witte by May 31.

BE PART OF THE NEW WITTE, AS A MEMBER!

The Witte Museum is transforming the 90-year-old museum with a once-in-a-lifetime major renovation and expansion!

The new Robert J. and Helen C. Kleberg South Texas Heritage Center, H-E-B Body Adventure, and the East Wing of the B. Naylor Morton Research and Collections Center are open and marked the start of this exciting new era. And now the new Mays Family Center will open in May 2016 with its inaugural exhibition *Maya: Hidden Worlds Revealed*.

There is more to come in the year ahead, with the opening in spring 2017 of new galleries dedicated to Texas dinosaurs, ancient peoples of the Pecos, native Texas wildlife, and more. New interactive lab spaces will help us serve more than 100,000 school children every year. New exhibits will be a fitting showcase for the state's most extensive collection of Texas artifacts and historical items.

We hope you'll join us and help us create the New Witte, with **free general admission, and more as a member.**

Welcome!



3801 Broadway
San Antonio, Texas 78209

Special Offer:
15 months of membership for the price of 12!



YOU ARE INVITED TO JOIN THE WITTE MUSEUM

and enjoy 15 months of free general admission, special discounts, perks, and events as a Member!



May 14 – September 5, 2016
in the NEW Mays Family Center

Don't miss the largest traveling exhibition about the Maya ever to be toured in the United States!

One of the most sophisticated and powerful civilizations of all time, the Maya invented calendar and mathematical systems of remarkable precision, discovered the delicious allure of the cacao bean, and—during its Classic period (250–900 AD)—rivaled any civilization in Europe.

Discover our deep ties to this astonishing civilization through authentic artifacts, interactive exhibits, and hands-on activities for all ages. The Maya made a commitment to lead their world. San Antonio shares the commitment to lead as a City on the Rise. The Witte Museum is proud to present the Texas premiere of this exhibition, and we invite you to explore it as a member!

Created by



See *Maya: Hidden Worlds Revealed* first and free at the Grand Opening Weekend!

Be first to celebrate the opening of the new Mays Family Center and *Maya: Hidden Worlds Revealed* with special activities during the Grand Opening Weekend.

Member Preview Day

Friday, May 13, 2016

Grand Opening Weekend

Saturday & Sunday,
May 14 – 15, 2016

Please note, tickets for *Maya: Hidden Worlds Revealed* are regularly \$8 for members, \$20 for non-member adults, and \$17 for non-member children ages 4-11. **Join at one of the Witte Society levels and receive free tickets!**



New Mays Family Center

This new building enables the Witte to bring the newest blockbuster traveling exhibitions to San Antonio every summer. It will be available for weddings, conventions, business, and private events the rest of the year.



MORE TO EXPLORE AT THE WITTE

Splendor on the Range: American Indians and the Horse

On view through August 21, 2016

Discover how the introduction of the horse changed life for American Indians and altered the American West.

Free for members starting May 14.

\$3 for members through May 13, \$15 for non-member adults and \$12 for non-member children ages 4-11.



H-E-B Body Adventure

Enjoy fun, full-body activities and in-depth exhibits as you learn about your physical and mental health. **Free for members.**



Robert J. and Helen C. Kleberg South Texas Heritage Center

Discover the straight story of South Texas history, art, and culture. **Free for members.**

National Geographic Presents Earth Explorers

September 24, 2016 – January 22, 2017

Free for members during the opening weekend September 24–25, 2016

Join now to be a part of the opening of the New Witte in spring 2017, and explore Texas from millions of years ago to today!

- The Witte's first-ever Dinosaur Gallery and the world's largest dedicated to Texas dinosaurs.
- New Texas Wild Gallery will bring back popular native Texas wildlife dioramas in a much bigger and more innovative way.
- New People of the Pecos Gallery will immerse you in the lifeways of your ancestors.
- Six major gardens and riverside landscapes with more opportunities for learning and exploration.







MEMBERSHIP RSVP

Yes! I accept your invitation to become a member of the Witte Museum and **enjoy 15 months of free general admission** and more at the New Witte.

\$75 Family

\$70 Senior Family

\$40 Individual

Join at one of these levels to attend the *Maya: Hidden Worlds Revealed* VIP Preview Party on May 12 and get free exhibition tickets. Plus, save with limited-time discounts when you join by [mail](#), [phone](#), or [on-site](#) at the Witte by May 31!

~~\$200~~ \$175 Witte Society Family
+ 4 free tickets

Best
Value!

~~\$250~~ \$225 Explorer
+ 4 free tickets

~~\$110~~ \$85 Witte Society Individual
+ 2 free tickets

~~\$500~~ \$450 Voyager
+ 4 free tickets

Please make any changes to your name and address above, then complete payment information on reverse and mail this enrollment form in the envelope provided. Thank you for your membership support, and welcome!

FREE ADMISSION
for Members Only to

MAYA

HIDDEN WORLDS REVEALED.
MUNDOS OCULTOS REVELADOS

Member Preview Day

Friday, May 13, 2016

**Grand Opening
Weekend**

Saturday & Sunday,
May 14 – 15, 2016

Be first to celebrate the opening of the new Mays Family Center at the Witte and *Maya: Hidden Worlds Revealed* with special activities during the Grand Opening Weekend.



Tickets for *Maya: Hidden Worlds Revealed* are regularly

\$8 for members,

**\$20 for non-member adults
and \$17 for non-member
children ages 4-11.**

EXTRA MEMBER PRIVILEGES WHEN YOU JOIN BY MAY 31, 2016

- 15 months of free general admission to the New Witte.
- Free gift – a commemorative Witte tote bag.
- Free admission to opening weekend for *National Geographic Presents Earth Explorers*, September 24–25.
- Invitation to member celebrations for the New Witte, including the new Dinosaur Gallery opening in spring 2017.

Plus membership discounts and extra free *Maya: Hidden Worlds Revealed* tickets when you join at any Witte Society level!

Join at any level by May 31, 2016, for 3 extra months of membership and your free tote bag, and save with discounts on Witte Society and above levels!

Choose Your Preferred Payment Option

- My check for \$_____ is enclosed (payable to the Witte Museum)
- Please charge \$_____ to my credit card:
- American Express MasterCard Visa Discover

Cardholder Name

Card Number

Exp. Date

Security Code (3 or 4 digit code on reverse of card)

Signature

Please Provide Additional Information

Primary Member Name

Dr. Mr. Mrs. Ms. (check one)

Second Member Name (for Dual/Family and above)

Dr. Mr. Mrs. Ms. (check one)

I would like to receive museum news, invitations, and updates by e-mail:

E-mail Address

Daytime Phone Number

Evening Phone Number

4 EASY WAYS TO JOIN

Please note: limited-time discounts are available only when you join by mail, phone, or on-site at the Witte by May 31, 2016.

- Mail** this form in the envelope provided
- Call** 210.357.1863
- Onsite** at the Admissions Desk
- Online** www.WitteMuseum.org



Thank you!

3801 Broadway
San Antonio, Texas 78209

**Be a part of a once-in-a-lifetime grand opening for San Antonio
and save on 15 months of free general admission!**

March 2016

Dear Friend:

You are invited to celebrate the opening of the Witte Museum's new Mays Family Center this spring and see its debut exhibition, *Maya: Hidden Worlds Revealed* with special privileges, as a member!

The Mays Family Center is part of the New Witte, a transformation of San Antonio's beloved museum of Texas-focused science, history, art and culture. Future additions, including the first-ever permanent dinosaur gallery, six riverside gardens, and more, will open in early 2017.

There is, and will be, so much for you to explore! And as a member, you'll enjoy unlimited free general admission, special discounts, perks, and insider's access for an extended 15 month membership year!

**Renew by May 31, 2016, and you will enjoy three extra months of membership
and receive a free gift—a commemorative tote bag.**

**I hope you'll renew quickly, to see *Maya: Hidden Worlds Revealed*
first and free as a member during the Grand Opening Weekend May 13–15.**

Maya: Hidden Worlds Revealed is the largest traveling exhibition about the Maya ever to tour the United States.

One of the most sophisticated and powerful civilizations of all time, the Maya invented calendar and mathematical systems of remarkable precision, discovered the delicious allure of the cacao bean, and—during its Classic period (250–900 AD)—rivaled any civilization in Europe.

Discover this astonishing civilization through authentic artifacts, interactive exhibits, and hands-on activities for all ages. The Maya made a commitment to lead their world. San Antonio shares the commitment to lead as a City on the Rise. The Witte Museum is proud to present the Texas premiere of this exhibition, and we invite you to explore it as a member!

Members will receive free admission to *Maya: Hidden Worlds Revealed* during the Grand Opening Weekend. After May 15, tickets for the exhibition will be deeply discounted to \$8 for members (\$20 for non-member adults and \$17 for non-member children ages 4–11). **Renew at one of the Witte Society levels, and you'll receive free exhibition tickets to use at your convenience!**

The new Mays Family Center and *Maya: Hidden Worlds Revealed* are only the beginning!

There's much more in store for you as a member of the New Witte! With your 15-month membership year, you will be part of another exciting opening in early 2017, when we open the New Witte.

(over, please)

You'll encounter Texas from millions of years ago through the present day, and beyond! In our first-ever permanent **Dinosaur Gallery**, see giant fossilized skeletons of Texas dinosaurs, hands-on activities in the paleontology lab and more. The new **Texas Wild Gallery** will bring back popular native Texas wildlife dioramas in a much bigger and more innovative way. A new **People of the Pecos Gallery** will immerse you in lifeways of Texas' ancient people, while **six major gardens and riverside landscapes** will offer more opportunities for learning and exploration.

There's even more to explore right now at the Witte!

The special exhibition *Splendor on the Range: American Indians and the Horse* is on view through August 21, and shows how life changed for American Indians and the American West when the Spanish brought horses to North America in the 1500s. Members can see *Splendor on the Range* with discounted tickets now, or for free starting May 14!

In September, your imagination will run wild as you embark on an epic adventure to discover new species, study animal behavior, and more in the new exhibition *National Geographic presents Earth Explorers*. **Renew today and see it free during the opening weekend September 24–25.**

Witte permanent exhibit galleries—including the immensely popular **H-E-B Body Adventure**, the **Robert J. and Helen C. Kleberg South Texas Heritage Center**, and the B. Naylor Morton Research and Collections Center—are always free for members!

Membership is a great value! **Family memberships start at \$75, and offer free general admission to two adults and their children or grandchildren age 18 and under**, plus invitations to exclusive previews and events such as the annual holiday party. (Seniors save \$5!)

You will enjoy even more access and benefits when you renew at one of our Witte Society or above levels. The Witte Society Family membership is discounted to \$175 (regularly \$200), and includes free admission for two additional guests each visit. You'll also receive invitations to many exclusive Witte Society events throughout the year, starting with the **VIP Preview for *Maya: Hidden Worlds Revealed*** on May 12. **Witte Society Family members also receive four free exhibition tickets!**

This is a monumental time for the Witte Museum. The new Mays Family Center will give us the space to host blockbuster exhibitions so you will no longer have to travel to Houston, Dallas, and beyond for these world-class cultural experiences.

Please take the time to review your options on the Membership RSVP enclosed. When you renew today, we'll send out your new membership card immediately and add you to the invitation list to see *Maya: Hidden Worlds Revealed* free and first, as a member. I look forward to welcoming you to the New Witte soon!

Sincerely,

Marise McDermott
President & CEO

P.S. Please respond quickly to see *Maya: Hidden Worlds Revealed* free during its Grand Opening Weekend. Special limited-time discounts are available when you renew by mail, phone, or on-site at the Witte by May 31! *Thank you!*

**Be a part of a once-in-a-lifetime grand opening for San Antonio
and save on 15 months of free general admission!**

March 2016

Dear Friend:

You are invited to celebrate the opening of the Witte Museum's new Mays Family Center this spring and see its debut exhibition, *Maya: Hidden Worlds Revealed* with special privileges, as a member!

The Mays Family Center is part of the New Witte, a transformation of San Antonio's beloved museum of Texas-focused science, history, art and culture. Future additions, including the first-ever permanent dinosaur gallery, six riverside gardens, and more, will open in early 2017.

There is, and will be, so much for you to explore! And as a member, you'll enjoy unlimited free general admission, special discounts, perks, and insider's access for an extended 15 month membership year!

**Join by May 31, 2016, and you will enjoy three extra months of membership
and receive a free gift—a commemorative tote bag.**

**I hope you'll join quickly, to see *Maya: Hidden Worlds Revealed*
first and free as a member during the Grand Opening Weekend May 13–15.**

Maya: Hidden Worlds Revealed is the largest traveling exhibition about the Maya ever to tour the United States.

One of the most sophisticated and powerful civilizations of all time, the Maya invented calendar and mathematical systems of remarkable precision, discovered the delicious allure of the cacao bean, and—during its Classic period (250–900 AD)—rivaled any civilization in Europe.

Discover this astonishing civilization through authentic artifacts, interactive exhibits, and hands-on activities for all ages. The Maya made a commitment to lead their world. San Antonio shares the commitment to lead as a City on the Rise. The Witte Museum is proud to present the Texas premiere of this exhibition, and we invite you to explore it as a member!

Members will receive free admission to *Maya: Hidden Worlds Revealed* during the Grand Opening Weekend. After May 15, tickets for the exhibition will be deeply discounted to \$8 for members (\$20 for non-member adults and \$17 for non-member children ages 4–11). **Join at one of the Witte Society levels, and you'll receive free exhibition tickets to use at your convenience!**

The new Mays Family Center and *Maya: Hidden Worlds Revealed* are only the beginning!

There's much more in store for you as a member of the New Witte! With your 15-month membership year, you will be part of another exciting opening in early 2017, when we open the New Witte.

(over, please)

You'll encounter Texas from millions of years ago through the present day, and beyond! In our first-ever permanent **Dinosaur Gallery**, see giant fossilized skeletons of Texas dinosaurs, hands-on activities in the paleontology lab and more. The new **Texas Wild Gallery** will bring back popular native Texas wildlife dioramas in a much bigger and more innovative way. A new **People of the Pecos Gallery** will immerse you in lifeways of Texas' ancient people, while **six major gardens and riverside landscapes** will offer more opportunities for learning and exploration.

There's even more to explore right now at the Witte!

The special exhibition *Splendor on the Range: American Indians and the Horse* is on view through August 21, and shows how life changed for American Indians and the American West when the Spanish brought horses to North America in the 1500s. Members can see *Splendor on the Range* with discounted tickets now, or for free starting May 14!

In September, your imagination will run wild as you embark on an epic adventure to discover new species, study animal behavior, and more in the new exhibition *National Geographic presents Earth Explorers*. **Join today and see it free during the opening weekend September 24–25.**

Witte permanent exhibit galleries—including the immensely popular **H-E-B Body Adventure**, the **Robert J. and Helen C. Kleberg South Texas Heritage Center**, and the **B. Naylor Morton Research and Collections Center**—are always free for members!

Membership is a great value! **Family memberships start at \$75, and offer free general admission to two adults and their children or grandchildren age 18 and under**, plus invitations to exclusive previews and events such as the annual holiday party. (Seniors save \$5!)

You will enjoy even more access and benefits when you join at one of our Witte Society or above levels. The Witte Society Family membership is discounted to \$175 (regularly \$200), and includes free admission for two additional guests each visit. You'll also receive invitations to many exclusive Witte Society events throughout the year, starting with the **VIP Preview for *Maya: Hidden Worlds Revealed*** on May 12. **Witte Society Family members also receive four free exhibition tickets!**

This is a monumental time for the Witte Museum. The new Mays Family Center will give us the space to host blockbuster exhibitions so you will no longer have to travel to Houston, Dallas, and beyond for these world-class cultural experiences.

Please take the time to review your options on the Membership RSVP enclosed. When you join today, we'll send out your new membership card immediately and add you to the invitation list to see *Maya: Hidden Worlds Revealed* free and first, as a member. I look forward to welcoming you to the New Witte soon!

Sincerely,

Marise McDermott
President & CEO

P.S. Please respond quickly to see *Maya: Hidden Worlds Revealed* free during its Grand Opening Weekend. Special limited-time discounts are available when you join by mail, phone, or on-site at the Witte by May 31! *Thank you!*

Please Rush! New Membership Enclosed



PLACE
STAMP
HERE

MEMBERSHIP DEPARTMENT
WITTE MUSEUM
3801 BROADWAY ST
SAN ANTONIO TX 78209-6396

